

MUSIC KNOWLEDGE EVALUATION

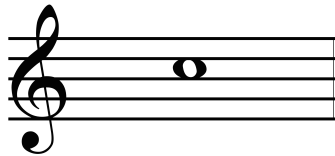
You may choose to print and complete this evaluation, or you may view digitally online. Either way, you will submit your responses via a Google form linked on the choir website.

1. Which of these is a double bar line?



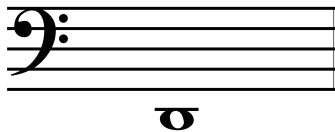
2. What is the letter name for this note?

- A. A
- B. B
- C. C
- D. D



3. What is the letter name for this note?

- A. A
- B. B
- C. C
- D. D



4. What does this navigation symbol stand for and mean?

- A. Da Segno, which means to go to the sign
 - B. Dento Cadenza, which means to perform a virtuosic improvised solo
 - C. Da Capo, which means to go the beginning of the piece
 - D. Director Connection, which means to watch the conductor carefully
- D.C.*

5. What does a key signature tell you?

- A. The location of DO
- B. Which notes are raised (sharps) or lowered (flats)
- C. The tonal center of the music
- D. What finger patterns to expect (if you're playing an instrument)
- E. All of the above

6. What is the order of flats (from left to right) in any key signature?

- A. F, B, E, A, D, G, C
- B. F, C, G, D, A, E, B
- C. B, E, A, D, G, C, F
- D. E, G, B, D, F

7. Choose the key signature from the following options:

- A. A major
- B. B major
- C. C# major
- D. D major
- E. E major

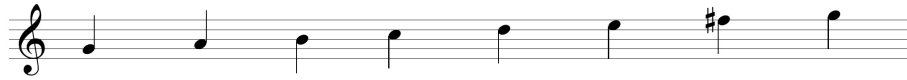


8. Choose the key signature from the following options:

- A. Ab minor
- B. Bb minor
- C. C minor
- D. Db minor
- E. Eb minor

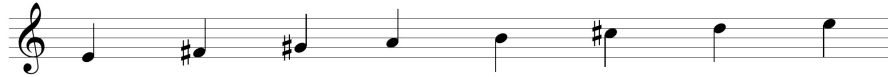


9. What scale is this?



- A. Major
- B. Natural minor
- C. Harmonic minor
- D. Melodic minor

10. What mode is this?



- A. Phrygian
- B. Dorian
- C. Mixolydian
- D. Ionian

11. What is the name of this note value?

- A. Whole note
- B. Half note
- C. Quarter note
- D. Eighth note



12. What is the total number of beats below in 4/4 time?

- A. 2
- B. 3
- C. 4
- D. 5



13. Which measure is missing a note value?



- A. The first measure
- B. The second measure
- C. The third measure
- D. The fourth measure

14. Which measure is missing a note value?



- A. The first measure
- B. The second measure
- C. The third measure
- D. The fourth measure

15. Complete this rhythm math. Reflect your answer in **quarter note values**.

- A. 3 quarter notes
- B. 4 quarter notes
- C. 5 quarter notes
- D. 6 quarter notes



16. Complete this rhythm math. Reflect your answer in **half note values**.

- A. 3 half notes
- B. 4 half notes
- C. 5 half notes
- D. 6 half notes



17. Complete this rhythm math. Reflect your answer in **eighth rest values**.

- A. 3 eighth rests
- B. 4 eighth rests
- C. 5 eighth rests
- D. 6 eighth rests

$$- + \} = \underline{\hspace{2cm}}$$

18. What syllable is a perfect 4th (P4) above MI?

- A. FA
- B. SOL
- C. LA
- D. TI

19. What is the interval between RE and the TI above it?

- A. Third
- B. Fifth
- C. Sixth
- D. Seventh

20. What is the size and quality of this interval?

- A. Major 3rd
- B. Diminished 4th
- C. Perfect 4th
- D. Augmented 4th



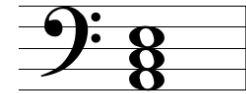
21. What is the size and quality of this interval?

- A. Major 2nd
- B. Minor 3rd
- C. Major 3rd
- D. Perfect 4th



22. What is the quality of this triad?

- A. Major
- B. Minor
- C. Augmented
- D. Diminished



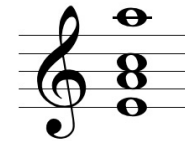
23. What is the quality of this triad?

- A. Major
- B. Minor
- C. Augmented
- D. Diminished



24. Which note is the root of this chord?

- A. A
- B. B
- C. C
- D. D



25. Which note is the root of this chord?

- A. A
- B. B
- C. C
- D. D

